

SEE • • DS

AT

OPERA E

TORINO

2017

**SEE••DS**

*PRESENTS*

**SECTIONS**

*A PROJECT BY*

**GUGLIELMO POLETTI**

*FOR*

**PHM | PIEMONTE HANDMADE**

## SECTIONS

Guglielmo Poletti

*The tube is a simple element, but one of great versatility. Taking into consideration the tube's many uses, Guglielmo Poletti's most recent pursuit is to play around and alter its forms unexpectedly, to create a new functionality.*

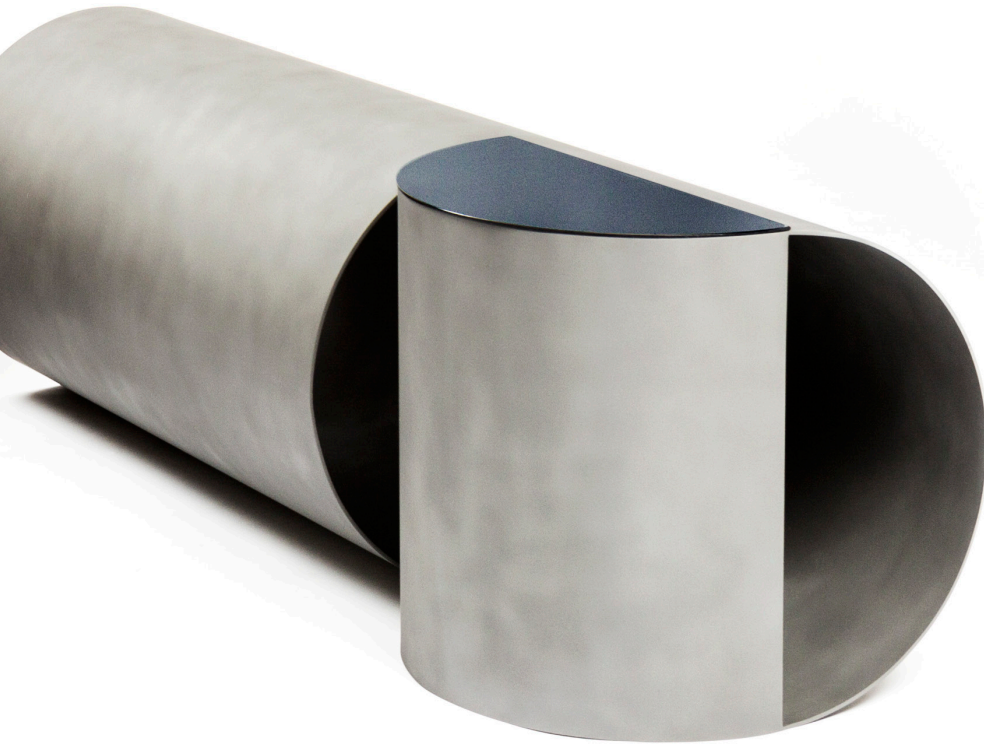
*Since his recent "thesis" project (2016) at Eindhoven's design academy, the designer has shown an almost obsessive fascination with the ideas of balance and tension. In a previous collection presented by SEEDS, his glass and metal acrobatics gave shape to the precarious balance of these materials by stabilizing them into functioning as a bench and a table: his new work for Operæ insists upon this theme with the same effectiveness.*

*For the PHM | Piemonte Handmade, the designer has collaborated with the metal masters of the historic company, Berrone di Volvera, to create an unprecedented object that revolutionizes a steel tube's behaviour through a simple offset of its own sections.*



SEE••DS

SECTIONS (INDOOR), 2017  
GUGLIELMO POLETTI



*SECTIONS, is a project derived from the idea of cutting a section of a tubular structure and reversing it, and by doing so, changing the typology of the piece.*

*With three cuts, one simple rotation and four welding points, without any additional material or component, the tube has become a bench. A second gesture, turning it over, is enough to create, right next to the bench, an integrated side-table whose plane becomes a structural element that ensures the stability of the piece, thanks to its own weight.*

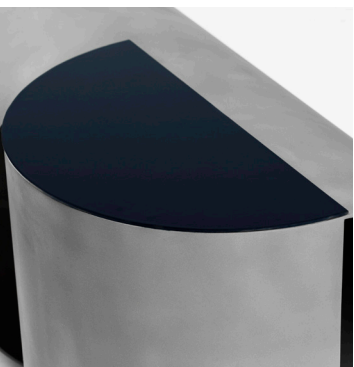
*In Corten and in steel, one conceived for the exterior, the other for the interior, Poletti's two new pieces retain the strange elegance that distinguishes his previous work.*

sandblasted steel (oil finish), stove enamelled steel

H 45 x W 135 X D 45 cm

ed of 8 + A.P.

£ 10 000 exc. VAT / € 11 500 IVA non inc.





SEE••DS

## SECTIONS (OUTDOOR), 2017 GUGLIELMO POLETTI

*SECTIONS, is a project derived from the idea of cutting a section of a tubular structure and reversing it, and by doing so, changing the typology of the piece.*

*With three cuts, one simple rotation and four welding points, without any additional material or component, the tube has become a bench. A second gesture, turning it over, is enough to create, right next to the bench, an integrated side-table whose plane becomes a structural element that ensures the stability of the piece, thanks to its own weight.*

*In Corten and in steel, one conceived for the exterior, the other for the interior, Poletti's two new pieces retain the strange elegance that distinguishes his previous work.*

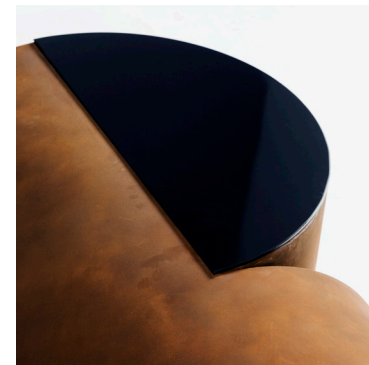
sandblasted corten steel (oil finish), stove enamelled steel

H 45 X W 135 X D 45 cm

ed of 8 + A.P.

£ 11 500 excl. VAT / € 13 000 IVA non inc.

SEEDSLONDON.COM



SEE••DS

OPERA E

TORINO

2017

SEE••DS

SKIN FLOOR LOUNGE, 2014  
GUGLIELMO POLETTI



*SKIN FLOOR LOUNGE is a sitting element which results from deconstructing the image of a low chair, removing matter in the attempt to push it towards maximum simplification. The construction of the piece ensures visual lightness thanks to the minimum thickness of the main structure, made out of a 3 mm steel sheet, which is first laser cut and then bent into the final shape. The inner skeleton — upholstered in fine caramel leather — gently bends under one's weight thanks to metal's flexibility, enhancing the functionality of the piece by providing good comfort despite the extreme essentiality.*



steel, foam and leather

H 42 x W 93 x D 72 cm

ed of 8 + A.P.

£ 5 550 excl. VAT / € 6 200 IVA non inc.



SEE••DS

**EUFRATE —  
MECCANICOARCHEOLOGICO, 2017  
DUCCIO MARIA GAMBI**

*The starting point for this collaboration with Italian stone manufacturer Casone was the will to play with the large catalogue of stones and marbles from the company. The result consists in 2 precise sorter boxes — interconnected little blocks rendering a bigger, controlled whole, owning a vibrant attitude over a heavy standing–still essence. A controlled balance and synergy between lines and volumes, with smooth and shiny surfaces playing with light that vibrantly bounces off or runs comfortably.*

basaltina, noire dorée, onice arancio

H 50 X W 45 X D 47 cm

unique

£ 2 200 excl. VAT / € 2 500 IVA non inc.





SEE••DS

IONIO —  
MECCANICOARCHEOLOGICO, 2017  
DUCCIO MARIA GAMBI

*The starting point for this collaboration with Italian stone manufacturer Casone was the will to play with the large catalogue of stones and marbles from the company. The result consists in 2 precise sorter boxes — interconnected little blocks rendering a bigger, controlled whole, owning a vibrant attitude over a heavy standing-still essence. A controlled balance and synergy between lines and volumes, with smooth and shiny surfaces playing with light that vibrantly bounces off or runs comfortably.*

basaltina, statuario altissimo, verde rameggiante

H 50 x W 45 x D 47 cm

unique

£ 2 200 excl. VAT / € 2 500 IVA non inc.

MAOF / L'AMOUR, 2017  
DUCCIO MARIA GAMBI

*MAOF / L' Amour is a synergy between two antithetical matter. The cement fills the vacuum created in the foam, completing the volume and taking over its surface. The foam, after the "peeling" process, remains at times, an almost organic and intermittently so skin. L'Amour has an unusual genesis, technically unpredictable.*

concrete and foam

H 40 x W 20 x D 20 cm

unique

£ 1 350 excl. VAT / € 1 500 IVA non inc.





SEE••DS

MAOF / L'AMOUR, 2017  
DUCCIO MARIA GAMBI

*MAOF / L' Amour is a synergy between two antithetical matter. The cement fills the vacuum created in the foam, completing the volume and taking over its surface. The foam, after the "peeling" process, remains at times, an almost organic and intermittently so skin. L'Amour has an unusual genesis, technically unpredictable.*

concrete and foam

H 40 x W 27 x D 20 cm

unique

£ 1 350 excl. VAT / € 1 500 IVA non inc.



MAOF / L'AMOUR, 2017  
DUCCIO MARIA GAMBI

*MAOF / L' Amour is a synergy between two antithetical matter. The cement fills the vacuum created in the foam, completing the volume and taking over its surface. The foam, after the "peeling" process, remains at times, an almost organic and intermittently so skin. L'Amour has an unusual genesis, technically unpredictable.*

concrete and foam

H 70 x W 60 x D 30 cm

unique

£ 2000 excl. VAT / € 2 300 IVA non inc.





SEE••DS

FAR DEEP VOID, 2017  
DUCCIO MARIA GAMBI

*Unusual and unpleasant shapes, unusual and unpleasant textures, obscure matter deposits.*

*FAR DEEP VOID is a collection of sculptural vases literally emerging from a block of Polystyrene. The block is first melted in the inside through acetone to obtain a partially controlled void, where the flowing of a mass of concrete eaves some of its fluid on the inner rough surface, in the form to a thin layer. The block is later melted down from the outside leaving the hardened concrete shape emerge and reveal, rendering the unknown void shape visible and touchable. Melted polystyrene, once lost its recognizable aspect, becomes part of the final object partly covering it, leaving a permanent trace of its genesis and of the process itself.*

concrete and polystyrene

H 28 x W 23 x D 19 cm

unique

£ 600 excl. VAT / € 680 IVA non inc.





FAR DEEP VOID, 2017  
DUCCIO MARIA GAMBI

*Unusual and unpleasant shapes, unusual and unpleasant textures, obscure matter deposits.*

*FAR DEEP VOID is a collection of sculptural vases literally emerging from a block of Polystyrene. The block is first melted in the inside through acetone to obtain a partially controlled void, where the flowing of a mass of concrete eaves some of its fluid on the inner rough surface, in the form to a thin layer. The block is later melted down from the outside leaving the hardened concrete shape emerge and reveal, rendering the unknown void shape visible and touchable. Melted polystyrene, once lost its recognizable aspect, becomes part of the final object partly covering it, leaving a permanent trace of its genesis and of the process itself.*

concrete and polystyrene

H 61 x W 37 x D 26 cm

unique

£ 1 500 excl. VAT / € 1 800 IVA non inc.





SEE••DS

FAR DEEP VOID, 2017  
DUCCIO MARIA GAMBI

*Unusual and unpleasant shapes, unusual and unpleasant textures, obscure matter deposits.*

*FAR DEEP VOID is a collection of sculptural vases literally emerging from a block of Polystyrene. The block is first melted in the inside through acetone to obtain a partially controlled void, where the flowing of a mass of concrete eaves some of its fluid on the inner rough surface, in the form to a thin layer. The block is later melted down from the outside leaving the hardened concrete shape emerge and reveal, rendering the unknown void shape visible and touchable. Melted polystyrene, once lost its recognizable aspect, becomes part of the final object partly covering it, leaving a permanent trace of its genesis and of the process itself.*

concrete and polystyrene

H61 x W 20 x D 20 cm

unique

£ 1 000 excl. VAT / € 1 200 IVA non inc.





FAR DEEP VOID, 2017  
DUCCIO MARIA GAMBI

*Unusual and unpleasant shapes, unusual and unpleasant textures, obscure matter deposits.*

*FAR DEEP VOID is a collection of sculptural vases literally emerging from a block of Polystyrene. The block is first melted in the inside through acetone to obtain a partially controlled void, where the flowing of a mass of concrete eaves some of its fluid on the inner rough surface, in the form to a thin layer. The block is later melted down from the outside leaving the hardened concrete shape emerge and reveal, rendering the unknown void shape visible and touchable. Melted polystyrene, once lost its recognizable aspect, becomes part of the final object partly covering it, leaving a permanent trace of its genesis and of the process itself.*

concrete and polystyrene

H 51 x W 35 x D 31 cm

unique

£ 1 900 excl. VAT / € 2 200 IVA non inc.





SEE••DS

FAR DEEP VOID, 2017  
DUCCIO MARIA GAMBI

*Unusual and unpleasant shapes, unusual and unpleasant textures, obscure matter deposits.*

*FAR DEEP VOID is a collection of sculptural vases literally emerging from a block of Polystyrene. The block is first melted in the inside through acetone to obtain a partially controlled void, where the flowing of a mass of concrete eaves some of its fluid on the inner rough surface, in the form to a thin layer. The block is later melted down from the outside leaving the hardened concrete shape emerge and reveal, rendering the unknown void shape visible and touchable. Melted polystyrene, once lost its recognizable aspect, becomes part of the final object partly covering it, leaving a permanent trace of its genesis and of the process itself.*



concrete and polystyrene

H 33 x W 19 x D 20 cm

unique

£ 660 excl. VAT / € 750 IVA non inc.

FAR DEEP VOID, 2017  
DUCCIO MARIA GAMBI

*Unusual and unpleasant shapes, unusual and unpleasant textures, obscure matter deposits.*

*FAR DEEP VOID is a collection of sculptural vases literally emerging from a block of Polystyrene. The block is first melted in the inside through acetone to obtain a partially controlled void, where the flowing of a mass of concrete eaves some of its fluid on the inner rough surface, in the form to a thin layer. The block is later melted down from the outside leaving the hardened concrete shape emerge and reveal, rendering the unknown void shape visible and touchable. Melted polystyrene, once lost its recognizable aspect, becomes part of the final object partly covering it, leaving a permanent trace of its genesis and of the process itself.*

concrete and polystyrene

H 40 x W 24 x D 23 cm

unique

£ 970 excl. VAT / € 1 100 IVA non inc.





SEE••DS

DERMALLOW (1), 2017  
MATTEO CIBIC



*'Anything one man can imagine, other men can make real.'*  
– Jules Verne

*Dermapoliesis is a nearby future utopia by Matteo Cibic, an imagined place not linked to technology but instead to organic forms. It is a world with a new flora and fauna that self-produces its own processed materials to meet the needs of the day.*

*The biggest sculptures, called DERMALLOW, are prototypes for imagined organisms that produce processed materials for the production of objects. The largest of the three sculptures (pictured here) refills glass containers with oxygen.*

styrofoam, resin and glass

H 189 x W 65 x D 40 cm

ed of 3

£ 8 500 excl. VAT / € 9 500 IVA non inc.



SEE••DS

## DERMIDERMA (BENCH), 2017 MATTEO CIBIC



*'Anything one man can imagine, other men can make real.'*  
– Jules Verne

*Dermapoliesis is a nearby future utopia by Matteo Cibic, an imagined place not linked to technology but instead to organic forms. It is a world with a new flora and fauna that self-produces its own processed materials to meet the needs of the day.*

*DERMIDERMA is a selection of imagined organic self-growing objects with a function. This series of plants grow as a single bench, console or stacked shelving system to display the organisms of the future.*

*Specially sized commissions also available on request.*

lime wood

H 42 x W 130 x D 38 cm

£ 2 000 excl. VAT / € 2 240 IVA non inc.





SEE••DS

## THE (NOT SO) GLORIOLE LAMP, 2015 MARC DIBEH

*The idea behind the lamps is to deprive an originally shiny material, in this case, brass, of its reflective quality and to purposefully roughen it by oxidising, thus also intensifying the inner halo and giving the object an egotistical presence.*

### Table light

oxidized brass, oak, black painted steel, marble

H85x30X18 cm

ed. of 2

£ 3 500 excl. VAT / € 4 000

### Floor Light

oxidized brass, oak, black painted steel, marble

H205x40X20 cm

ed. of 2

£ 4 000 excl. VAT / € 4 500 IVA non inc.





SEE••DS

FILTER LIGHT, 2017  
SABINE MARCELIS



*FILTER is a series of lighting which utilises the material properties of HI-MACS combined with cast resin to filter a light source, highlighting the material's hidden qualities. Patterns and colours which do not reveal themselves when the light is in its off-state are exposed and celebrated once the lights are lit-up.*

Hi-Macs, polished resin

Ø 100 x D 6 cm

ed of 3

£ 6 900 excl. VAT / € 7 800 IVA non inc.



SEEDSLONDON.COM



SEE••DS

DAFFODILS, 2016  
PIETRO RUSSO

*DAFFODILS is inspired by Wordsworth's poem "I Wandered Lonely as a Cloud" (1804), Russo's Daffodils have flower-like heads with deliberately unnatural proportions. These forms seemingly stare into the future and their strange roots, which are planted in the ceiling, possibly draw from the past. Neither mirrors nor lamps, these upside down antennas emit light but, in addition, are openly awaiting the "light" of a possible interpretation.*



brushed brass and mirrors

H adjustable x W 65 x D 36 cm

£ 7 500 excl. VAT / € 8 500 IVA non inc.

SEEDSLONDON.COM



SEE••DS

PAGODA, 2015  
PIETRO RUSSO

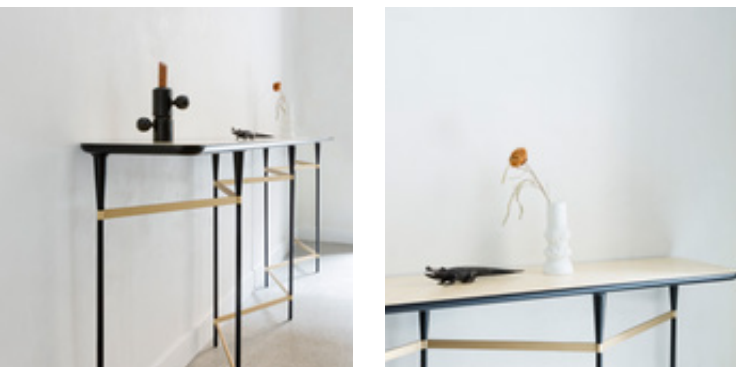


*PAGODA with his lower edges curved upwards and the elegant structure, is inspired by the delicate and pure lines of the Oriental art.*

taba wood, black powder coated iron and brass

H 90 x W 160 x D 35 cm

£ 7 200 excl. VAT / € 8 000 IVA non inc.



SEEDSLONDON.COM



## BALANCE (TYPE C), 2011

## BCXSY

*BALANCE is one of seven area rugs woven in the Palestinian-Bedouin tradition by the women in Lakiya, Israel. It is hand woven on traditional ground looms using the wool of local desert sheep. It is the designer's response to this optimism, that in the midst of adversity and misfortune there is a lasting element of proportion and beauty. Drawing from the surrounding landscape of the Negev Desert in both color and texture, each piece in Balance pushes the perceived confines of traditional woven dimensions and expected application of decorative elements.*

*The rugs are the result of working within the boundaries of the Bedouin weaving practice, where it is only possible to weave long, narrow strips of material. The strips are then cut and repositioned to create non-traditional and innovative silhouettes that generate new and exciting placement possibilities within the interior.*

*Made in collaboration with Sidreh and Lakiya Negev Weaving.*

wool of local desert sheep

240 x 220 cm

£ 1 800 excl. VAT / € 2 000 IVA non inc.



type E  
110x80cm



type D  
110x180cm



type A  
110x240cm

SEE••DS

BILDUNG #1 (BOX), 2017  
GIOVANNI DE FRANCESCO

*The term BUILDING has two meanings: in German language it means what has already been produced and what is in the process of being produced. Creative process for this series of work starts from observation of things and alchemy of materials that compose those things and tries to find other interpretations and meanings, working on ambiguity to create a sort of visual blunder. In the BUILDING series the plaster, concrete, wood, play with the object-funnel imitating its shape but denying its real function, in those new productions every sculpture changes the object function that it represents.*

pietra Forte Fiorentina

H 35 X Diam 20 cm

unique

£ 1 200 excl. VAT / € 1 340 IVA non inc.



SEE••DS

BILDUNG #2 (BELL), 2017  
GIOVANNI DE FRANCESCO

*The term BUILDING has two meanings: in German language it means what has already been produced and what is in the process of being produced. Creative process for this series of work starts from observation of things and alchemy of materials that compose those things and tries to find other interpretations and meanings, working on ambiguity to create a sort of visual blunder. In the BUILDING series the plaster, concrete, wood, play with the object-funnel imitating its shape but denying its real function, in those new productions every sculpture changes the object function that it represents.*

macigno

H 35 x Diam 14 cm

unique

£ 1 200 excl. VAT / € 1 340 IVA non inc.





SEE••DS

BILDUNG #3 (PAPERWEIGHT), 2017  
GIOVANNI DE FRANCESCO

*The term BUILDING has two meanings: in German language it means what has already been produced and what is in the process of being produced. Creative process for this series of work starts from observation of things and alchemy of materials that compose those things and tries to find other interpretations and meanings, working on ambiguity to create a sort of visual blunder. In the BUILDING series the plaster, concrete, wood, play with the object-funnel imitating its shape but denying its real function, in those new productions every sculpture changes the object function that it represents.*

volcanic lava and black belgium marble

H 20 x Diam 12 cm

unique

£ 1 200 excl. VAT / € 1 340 IVA non inc.





SEE••DS

BILDUNG #8, 2017

GIOVANNI DE FRANCESCO

*The term BUILDING has two meanings: in German language it means what has already been produced and what is in the process of being produced. Creative process for this series of work starts from observation of things and alchemy of materials that compose those things and tries to find other interpretations and meanings, working on ambiguity to create a sort of visual blunder. In the BUILDING series the plaster, concrete, wood, play with the object-funnel imitating its shape but denying its real function, in those new productions every sculpture changes the object function that it represents.*

plaster and iron oxide

H between 15-40 cm x Diam between 10-20 cm

unique

part of the set of 3 (building #8 | #9 | #15)

£ 1 200 excl. VAT / € 1 340 IVA non inc.



SEE••DS

BILDUNG #9, 2017  
GIOVANNI DE FRANCESCO



*The term BUILDING has two meanings: in German language it means what has already been produced and what is in the process of being produced. Creative process for this series of work starts from observation of things and alchemy of materials that compose those things and tries to find other interpretations and meanings, working on ambiguity to create a sort of visual blunder. In the BUILDING series the plaster, concrete, wood, play with the object-funnel imitating its shape but denying its real function, in those new productions every sculpture changes the object function that it represents.*



plaster and iron oxide

H between 15-40 cm x Diam between 10-20 cm

unique

part of the set of 3 (building #9 | #8 | #15)

£ 1 200 excl. VAT / € 1 340 IVA non inc.



SEE••DS

BILDUNG #15, 2017  
GIOVANNI DE FRANCESCO



*The term BUILDING has two meanings: in German language it means what has already been produced and what is in the process of being produced. Creative process for this series of work starts from observation of things and alchemy of materials that compose those things and tries to find other interpretations and meanings, working on ambiguity to create a sort of visual blunder. In the BUILDING series the plaster, concrete, wood, play with the object-funnel imitating its shape but denying its real function, in those new productions every sculpture changes the object function that it represents.*

plaster and iron oxide

H between 15-40 cm x Diam between 10-20 cm

unique

part of the set of 3 (building #15 | #8 | #9)

£ 1 200 excl. VAT / € 1 340 IVA non inc.



SEE••DS

BILDUNG #12, 2017

GIOVANNI DE FRANCESCO

*The term BUILDING has two meanings: in German language it means what has already been produced and what is in the process of being produced. Creative process for this series of work starts from observation of things and alchemy of materials that compose those things and tries to find other interpretations and meanings, working on ambiguity to create a sort of visual blunder. In the BUILDING series the plaster, concrete, wood, play with the object-funnel imitating its shape but denying its real function, in those new productions every sculpture changes the object function that it represents.*

wood

H between 15-40 cm x Diam between 10-20 cm

unique

part of the set of 2 (building #12 | #20 )

£ 1 600 excl. VAT / € 1 800 IVA non inc.





SEE••DS

BILDUNG #20, 2017

GIOVANNI DE FRANCESCO

*The term BUILDING has two meanings: in German language it means what has already been produced and what is in the process of being produced. Creative process for this series of work starts from observation of things and alchemy of materials that compose those things and tries to find other interpretations and meanings, working on ambiguity to create a sort of visual blunder. In the BUILDING series the plaster, concrete, wood, play with the object-funnel imitating its shape but denying its real function, in those new productions every sculpture changes the object function that it represents.*

plaster and iron oxide

H between 15-40 cm x Diam between 10-20 cm

unique

part of the set of 2 (building #20 | #12)

£ 1 600 excl. VAT / € 1 800 IVA non inc.



SEE••DS

BALAUSTRAS VASE, 2013  
OEUFFICE



*BALAUSTRAS VASE* was design in 2013 by Oeuffice Design Studio.

*This open structure vase has an oval shaped brass railing that supports the upper part of flower or plant stems. Its pure and overlapping metallic construction evokes the geometry of a twisted balustrade particularly common in Milanese rationalist architecture.*

nero di ormea marble, black oxide steel, solid brass

H 58 x 33 x 19 cm

£ 3 700 excl. VAT, € 4 200 IVA non inc.



SEE••DS

## SARACINESCA TABLE PODIUM, 2013 OEUFFICE

*The overlapping collage of grids and planes is inspired by the ornate detailing of Milanese security grilles. The multi-layered podium becomes a dramatic display for any tableware set and enhances the presentation of both, dishes and decorative elements.*

nero di ormea marble, black oxide steel, solid brass

H 74 x 32 x 20 cm

£ 3 700 excl. VAT, € 4 200 IVA non inc.



THIERRY, 2017  
CAMPBELL REY



*THIERRY table express several motifs that we look towards in our design practice, which at its heart is a desire to elevate everyday objects through a celebration of natural materials, unexpected colourways and a fascination with trompe l'oeil.*

*Often inspired by the playful elegance typified by the golden age of Italian design from the mid-20th century, Campbell-Rey have sought to create something that feels joyful and irreverent, yet firmly rooted in its materiality.*

*Crafted by hand in Carrara and London, this side table represents a new direction as we continue to expand our practice into the physical space.*

rosso Levanto, rose Aurora marble and brass

H 52 x Diam 45 cm

£ 4 500 excl. VAT / € 5 000 IVA non inc.





**ENQUIRIES:**

**INFO@SEEDSLONDON.COM**

**SHOWROOM BY APPT:**

**4 DOURO PLACE**

**LONDON W8 5PH**

**SEE • • DS**