

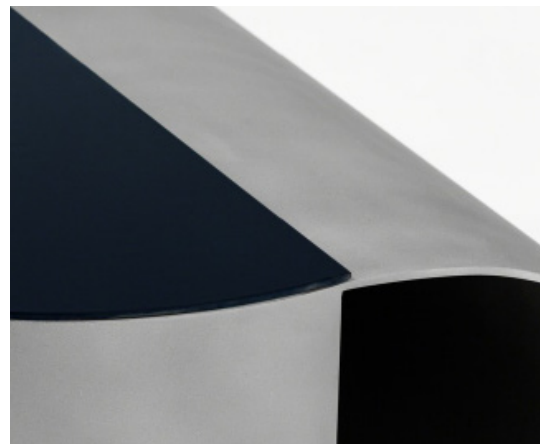
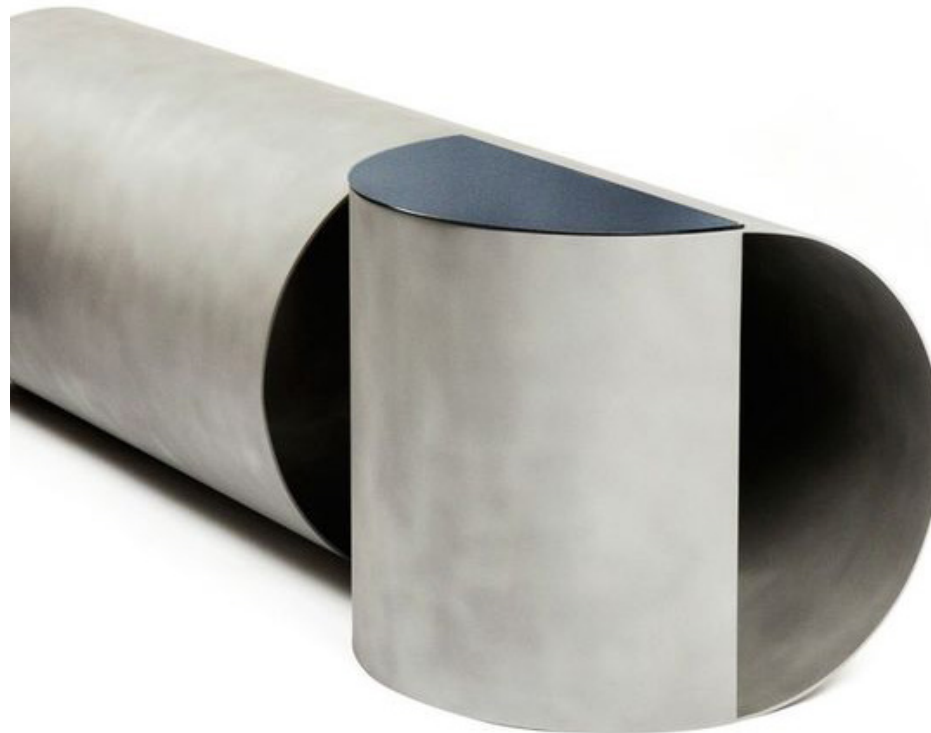
SECTIONS (INDOOR), 2017

Guglielmo Poletti

Sections, is a project derived from the idea of cutting a section of a tubular structure and reversing it, and by doing so, changing the typology of the piece.

For the PHM | Piemonte Handmade project, the designer has collaborated with the metal masters company Berrone Livio & C. to create an unprecedented object that revolutionizes a steel tube's behavior through a simple offset of its own sections.

Made in collaboration with Berrone Livio & C. di Volvera.



Sandblasted steel (oil finish), stove
enamelled steel

L 135 × W 45 × H 45 cm

Exclusive to SEEDS
Edition of 8 + A.P.

£ 11 600.00 excl. VAT