



# SEEDS

*Holiday Season  
Selection*



SEEDSLONDON.COM  
SEEDS@SEEDSLONDON.COM

## LUSTRE BAUBLES, 2020

Jochen Holz

Working with his own experimental techniques, this series of lustre pendants employs metallic oxides, which are painted onto the molten glass. Jochen beautifully creates a unique coloured wash effect on the glass with metallic lustres.



Borosilicate glass

ø 8 cm

Each unique can be made to order  
Exclusive to SEEDS

£ 40.00 excl. VAT – each

## CHAMPAGNE GLASSES, 2018

Jochen Holz

These hand-blown glasses by Jochen Holz are extraordinarily light. With the designer's trademark wobbly aesthetic, the vessels look almost watery themselves.



Borosilicate glass

ø 6 × H 23 cm

Each unique can be made to order

£ 65.00 excl. VAT each



**ROOT VASES, 2019****Jochen Holz**

The opaque coloured pieces are made of sections of borosilicate tubing which are partially heated up and shaped with a variety of tools to create root-looking forms.

The aim is to create functional yet sculptural objects: vase. Every piece is unique, individually considered and finished with the unique combination of forms and colour.



Borosilicate opaque glass

Vases from H 22–26 cm

Exclusive to SEEDS  
Each unique can be made to order

£ 200.00 excl. VAT – each  
£ 500.00 excl. VAT – set of 3

## WOOD TEXTURED COCKTAIL GLASSES WITH SWIVEL STICKS, 2020

Jochen Holz

Wood textured cocktail glass is a distinctive piece with an organic shape and a wood-inspired texture.

The work focuses on the materiality of borosilicate glass and a unique process to produce rich textures and complex shapes. Glass is often seen as a material of ultimate perfection, qualities of high polished transparency and vibrant colours. Jochen aims to disrupt this perfection and to break down the pristine nature of glass.



Borosilicate glass

ø 6 × H 12 cm

Each unique can be made to order

£ 64.00 excl. VAT – each

## WINE GLASSES, 2018

Jochen Holz

These hand-blown glasses by Jochen Holz are extraordinarily light. With the designer's trademark wobbly aesthetic, the vessels look almost watery themselves.



Borosilicate glass

ø 9 × H 23 cm

Each unique can be made to order

£ 70.00 excl. VAT each

**COLOURED GLASS CANDLESTICKS, 2019****Jochen Holz**

Hand-blown coloured and textured glass.



Borosilicate opaque glass

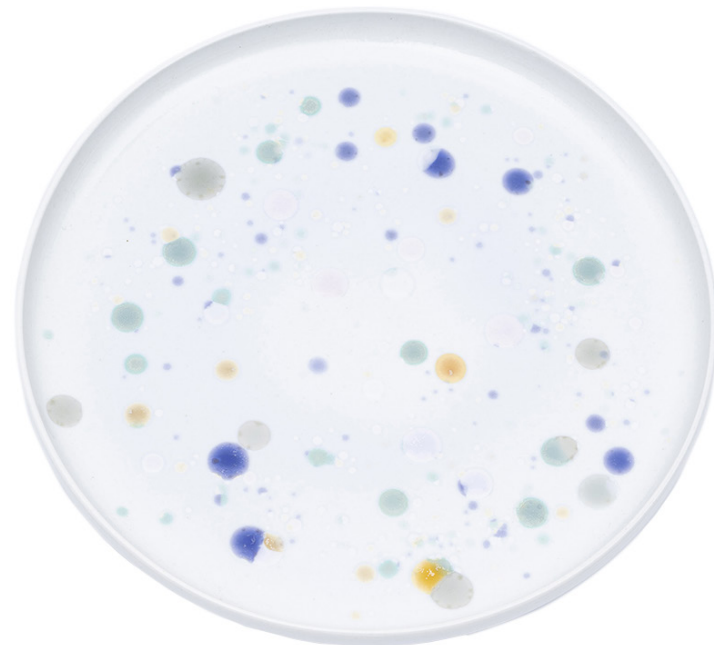
Dia 12.5cm, L 18 × D 8 × H 10 cm Each unique can be made to order

£ 400.00 excl. VAT pair

## JINGDEZHEN PLATE, 2019

Attua Aparicio

Made in Jingdezhen as part of Attua's ongoing research in ways of using waste borosilicate glass in combination with ceramics, as this glass can't not be recycled with the conventional recycling systems.



Porcelain, glaze and borosilicate glass

ø 30 × H 1 cm

Exclusive to SEEDS

£ 120.00 excl. VAT



## GEORGE SERVING BOARD, 2020

Marco Campardo

What is the role of waste material in contemporary design production? How can designers rethink the value of objects, materials and processes considered as waste? George is a collection of furniture made from reclaimed sheets of Alpi wood, using pieces discarded through industrial production to create new hand-crafted objects. The discarded scraps — sheets made from different colours and finishes — have been glued together to form a thick block of wood. In this way, sheets that are usually used as surface veneer, become a structural element, inverting the relationship between form and function, decoration and construction. Treating this processed material as a block of timber, Marco Campardo has chiselled the edges of the table, as a tongue-in-cheek homage to the great master George Nakashima. These chiselled blocks form an appealing series of stools, coffee tables and dining tables, offering a new aesthetic alternative to solid wood furniture. Inverting the relationship between the natural and the artificial, waste and resource, this project subtly questions the way we value materiality in the digital age.



Reclaimed Alpi Wood (various essences), Osmo Top Oil high solid (food safe)

ø 30 × H 3.2 cm

Exclusive to SEEDS  
Bespoke sizes and wood combinations  
upon request

£ 140.00 excl. VAT

## VIIIE VASES, 2018

Studio Berg

VIIIE VASES are sets of archaic-looking vases. They come in sets of 1, 2, 3 and 6, in medium sized vases. They are hand-thrown on a potter's wheel and therefore each has its unique personality. The vases are unglazed (on the outside) so their design varies just through the use of different kinds of clays and the individuality of the potters hands.

VIIIE Vases are designed in Berlin and handmade in Denmark in the little town Vig in Sjælland.



Clay

approx 10– 18 cm

£ 400.00 excl. VAT – set of 6  
£ 190.00 excl. VAT – set of 3  
£ 130.00 excl. VAT – set of 2  
£ 90.00 excl. VAT – set of 1

**117 (PINK), 2021****Onka Allmayer-Beck**

Using a slab building technique, each piece is handmade, with white burning clay before being hand glazed and twice fired for 24 hours.

**Hand-glazed clay****W 26 × D 13 × H 19 cm****Exclusive to SEEDS  
Unique****£ 900.00 excl. VAT**

## SALT + PEPPER SPITZ

Martino Gamper

Made of walnut and ash, the Pepper Spitz and Salt Spitz by Martino Gamper is inspired by the mountainous landscape of his home region.



Walnut and ash

L 5 × W 5 × H 28 cm

£ 86.00 excl. VAT each



## IN VINO VERITAS COASTER

Martino Gamper

Developed by Martino Gamper for his Total Trattoria project, this coaster is made of die-cut leather and is designed to hold 6 glasses at once.



Die-cut leather

L 36 × W 16 cm

£ 26.00 excl. VAT

## PLASTIC BAROQUE CUTLERY, 2019

James Shaw

Hand formed 304 stainless steel flatware with hand extruded handles.



Post consumer polyethelene and stainless steel

Dimensions vary

£ 50.00 excl. VAT per piece

## NAPKIN RING, 2019

James Shaw

Applying his usual technique of extruding recycled plastic, James Shaw creates these napkin rings, which can perhaps also be hung as decorations to give a unique spin to your Christmas tree.



## EMIL CANDLEHOLDER, 2021

I–Fan Chen

‘Emil’ is a series inspired by the intimate action and the gentle emotion of ripples created through movement, togetherness, curling and embracing of the human form. The method turns an eye away from the strictly traditional approach used to mould in series. I–Fan explores methods to transform, using a distinctively experimental method which utilises and relies on a set amount of force to create instant pressure upon impact. By so doing creating the unique characteristics of three-dimensional objects.

The objects are consecutively built and formed through the process of their making. The handcrafted shapes give a natural looking surface that enable the viewer to question as they view and find new intricacies to investigate.

This series was started in the pandemic of 2020, with ambitions to take the most soft, humorous and tender approach to respond to the turbulent world.





**SPECIAL EDITION CANDLES, 2021****Lex Pott**

Special edition candles are designed and crafted by Lex Pott using candle wax from The Netherlands, a special edition of 10 for SEEDS Gallery.

**Wax****Dimensions vary, base ø 30 × H 20  
cm****Each unique****£ 100.00 excl. VAT each**

**SPECIAL EDITION CANDLES, 2021****Lex Pott**

Special edition candles are designed and crafted by Lex Pott using candle wax from The Netherlands, a special edition of 10 for SEEDS Gallery.

**Wax****Dimensions vary, base ø 30 × H 20  
cm****Each unique****£ 100.00 excl. VAT each**



**SPECIAL EDITION CANDLES, 2021****Lex Pott**

Special edition candles are designed and crafted by Lex Pott using candle wax from The Netherlands, a special edition of 10 for SEEDS Gallery.

**Wax****Dimensions vary, base ø 30 × H 20  
cm****Each unique****£ 100.00 excl. VAT each**

**SPECIAL EDITION CANDLES, 2021****Lex Pott**

Special edition candles are designed and crafted by Lex Pott using candle wax from The Netherlands, a special edition of 10 for SEEDS Gallery.

**Wax****Dimensions vary, base ø 30 × H 20  
cm****Each unique****£ 100.00 excl. VAT each**





**SEEDSLONDON.COM**  
**SEEDS@SEEDSLONDON.COM**

**Showroom by appointment:**  
**4, Douro Place, London W8 5PH**