

SEEDS

COLLECT 2023

Available works

• •

SEEDSLONDON.COM
SEEDS@SEEDSLONDON.COM

Emerging Archaic

A conversation between two female artists: Elodie Blanchard, a textile artist who uses recycled fabrics that she pieces and then stitches together to create objects that are intrinsically sculptural, often inspired by nature: trees, flowers and landscapes, but also human aspects and emotions in the form of masks and clown faces, and Onka Allmayer-Beck, a ceramicist who makes unusual vessels using the slab-building technique, brush-glazing her pots with joyful colours. Both artists have in common an emotional and intuitive exploration of archaic sensibilities expressed in contemporary forms.

• •

SEEDSLONDON.COM
SEEDS@SEEDSLONDON.COM

NO.262 (CONFETTI)**Onka Allmayer-Beck**

Using a slab building technique, each piece is handmade, with white burning clay before being hand glazed and twice fired for 24 hours.

**Hand-glazed clay****H21 x L34 x W25 cm****Exclusive to SEEDS
Unique piece****£ 1,900.00 + VAT**

NO.263 (ACID YELLOW)**Onka Allmayer-Beck**

Using a slab building technique, each piece is handmade, with white burning clay before being hand glazed and twice fired for 24 hours.

**Hand-glazed clay****H21 x L34 x W25 cm****Exclusive to SEEDS
Unique piece****£ 2,200.00 + VAT**

NO.256 (WHITE)

Onka Allmayer-Beck

Using a slab building technique, each piece is handmade, with white burning clay before being hand glazed and twice fired for 24 hours.



Hand-glazed clay

H14 x L21 x W21 cm

Exclusive to SEEDS
Unique piece

£ 1,700.00 + VAT

MINI NO.249 (ORANGE)**Onka Allmayer-Beck**

Using a slab building technique, each piece is handmade, with white burning clay before being hand glazed and twice fired for 24 hours.

**Hand-glazed clay****H23 x L17 x W23 cm****Exclusive to SEEDS
Unique piece****£ 800.00 + VAT**

MINI NO.247 (BABY BLUE)**Onka Allmayer-Beck**

Using a slab building technique, each piece is handmade, with white burning clay before being hand glazed and twice fired for 24 hours.



Hand-glazed clay**H25 x L14 x W23 cm****Exclusive to SEEDS
Unique piece****£ 800.00 + VAT**

MINI NO.269 (RAIN)**Onka Allmayer-Beck**

Using a slab building technique, each piece is handmade, with white burning clay before being hand glazed and twice fired for 24 hours.

**Hand-glazed clay****H18 x L20 x W13 cm****Exclusive to SEEDS
Unique piece****£ 700.00 + VAT**

MINI NO.264 (CONFETTI)**Onka Allmayer-Beck**

Using a slab building technique, each piece is handmade, with white burning clay before being hand glazed and twice fired for 24 hours.

**Hand-glazed clay****H20 x D15 cm****Exclusive to SEEDS
Unique piece****£ 1,000.00 + VAT**

MINI NO.265 (ACID YELLOW)**Onka Allmayer-Beck**

Using a slab building technique, each piece is handmade, with white burning clay before being hand glazed and twice fired for 24 hours.

**Hand-glazed clay****H20 x D25 cm****Exclusive to SEEDS
Unique piece****£ 900.00 + VAT**

MINI NO.268 (TURQUOISE)**Onka Allmayer-Beck**

Using a slab building technique, each piece is handmade, with white burning clay before being hand glazed and twice fired for 24 hours.

**Hand-glazed clay****H18 x L21 x W24 cm****Exclusive to SEEDS
Unique piece****£ 700.00 + VAT**

MINI NO.267 (PINK)**Onka Allmayer-Beck**

Using a slab building technique, each piece is handmade, with white burning clay before being hand glazed and twice fired for 24 hours.

**Hand-glazed clay****H18 x L21 x W14 cm****Exclusive to SEEDS
Unique piece****£ 700.00 + VAT**

NO.253 (TOBACCO)**Onka Allmayer-Beck**

Using a slab building technique, each piece is handmade, with white burning clay before being hand glazed and twice fired for 24 hours.

**Hand-glazed clay****H39 x D40 cm****Exclusive to SEEDS
Unique piece****£ 3,500.00 + VAT**

NO.255 (GREEN)**Onka Allmayer-Beck**

Using a slab building technique, each piece is handmade, with white burning clay before being hand glazed and twice fired for 24 hours.

**Hand-glazed clay****H29 x L52 x W35 cm****Exclusive to SEEDS
Unique piece****£ 2,600.00 + VAT**

NO.256 (PINK)**Onka Allmayer-Beck**

Using a slab building technique, each piece is handmade, with white burning clay before being hand glazed and twice fired for 24 hours.

**Hand-glazed clay****H38 x L35 x W44 cm****Exclusive to SEEDS
Unique piece****£ 3,500.00 + VAT**

NO.254 (ORANGE)**Onka Allmayer-Beck**

Using a slab building technique, each piece is handmade, with white burning clay before being hand glazed and twice fired for 24 hours.

**Hand-glazed clay****H31 x D43 cm****Exclusive to SEEDS
Unique piece****£ 1,900.00 + VAT**

NO.246 (ACID YELLOW)**Onka Allmayer-Beck**

Using a slab building technique, each piece is handmade, with white burning clay before being hand glazed and twice fired for 24 hours.

**Hand-glazed clay****H31 x D37 cm****Exclusive to SEEDS
Unique piece****£ 3,300.00 + VAT**

NO.253 (BABY BLUE)**Onka Allmayer-Beck**

Using a slab building technique, each piece is handmade, with white burning clay before being hand glazed and twice fired for 24 hours.

**Hand-glazed clay****H29 x D35 cm****Exclusive to SEEDS
Unique piece****£ 3,300.00 + VAT**

NO.257 (PINK)**Onka Allmayer-Beck**

Using a slab building technique, each piece is handmade, with white burning clay before being hand glazed and twice fired for 24 hours.

**Hand-glazed clay****H36 x D38 cm****Exclusive to SEEDS
Unique piece****£ 2,700.00 + VAT**

NO.258 (RAIN)**Onka Allmayer-Beck**

Using a slab building technique, each piece is handmade, with white burning clay before being hand glazed and twice fired for 24 hours.

**Hand-glazed clay****H48 x D32 cm****Exclusive to SEEDS
Unique piece****£ 3,000.00 + VAT**

NO.261 (CONFETTI)**Onka Allmayer-Beck**

Using a slab building technique, each piece is handmade, with white burning clay before being hand glazed and twice fired for 24 hours.

**Hand-glazed clay****H30 x D31 cm****Exclusive to SEEDS
Unique piece****£ 2,200.00 + VAT**

NO.66 (BLACK)**Onka Allmayer-Beck**

Using a slab building technique, each piece is handmade, with white burning clay before being hand glazed and twice fired for 24 hours.

**Hand-glazed clay****H27 x D27 cm****Exclusive to SEEDS
Unique piece****£ 1,600.00 + VAT**

POUF 01**Elodie Blanchard**

Blanchard covers these ottomans in brightly sewn-coloured pieces of repurposed fabrics. The poufs are adorned with leather fringes, balls of knitted wool and decorative stitching. The scraps often originate from deadstock fabric, textile remnants, her clothes, or those of her friends and family. Each unique with individual characteristics.

**Recycled fabric, foam, wood****H47 x W45 x D45 cm****Each unique****£ 2,400.00 + VAT**

POUF 02**Elodie Blanchard**

Blanchard covers these ottomans in brightly sewn-coloured pieces of repurposed fabrics. The poufs are adorned with leather fringes, balls of knitted wool and decorative stitching. The scraps often originate from deadstock fabric, textile remnants, her clothes, or those of her friends and family. Each unique with individual characteristics.

**Recycled fabric, foam, wood****H47 x W45 x D45 cm****Each unique****£ 2,400.00 + VAT**

POUF 03**Elodie Blanchard**

Blanchard covers these ottomans in brightly sewn-coloured pieces of repurposed fabrics. The poufs are adorned with leather fringes, balls of knitted wool and decorative stitching. The scraps often originate from deadstock fabric, textile remnants, her clothes, or those of her friends and family. Each unique with individual characteristics.



POUF 04**Elodie Blanchard**

Blanchard covers these ottomans in brightly sewn-coloured pieces of repurposed fabrics. The poufs are adorned with leather fringes, balls of knitted wool and decorative stitching. The scraps often originate from deadstock fabric, textile remnants, her clothes, or those of her friends and family. Each unique with individual characteristics.

**Recycled fabric, foam, wood****H51 x W51 x D51 cm****Each unique****£ 2,400.00 + VAT**

Honest Clown

Elodie Blanchard

Elodie started this series of clowns during the 2020 U.S election, she was creating a commissioned large melting landscape but when exploring with the cord drifted away making a bunch of clowns to release her frustration.

Blanchard uses the cord in different ways: loose in a bundle, rolled and sewn together with bright stitches. The final portrait is pinned to the wall in place.

As always, material exploration guides Elodie's work, she is continuing this series to depict different emotions with humour and playfulness. They all manifest joy and hope.



Poly thread, polyester cords, cotton
cords

H76 x W86 x D3 cm

Each unique

£ 1,200.00 + VAT

Shy Clown

Elodie Blanchard

Elodie started this series of clowns during the 2020 U.S election, she was creating a commissioned large melting landscape but when exploring with the cord drifted away making a bunch of clowns to release her frustration.

Blanchard uses the cord in different ways: loose in a bundle, rolled and sewn together with bright stitches. The final portrait is pinned to the wall in place.

As always, material exploration guides Elodie's work, she is continuing this series to depict different emotions with humour and playfulness. They all manifest joy and hope.



Poly thread, polyester cords, cotton
cords

H99 x W87 x D3 cm

Each unique

£ 1,200.00 + VAT

Clown #2**Elodie Blanchard**

Elodie started this series of clowns during the 2020 U.S election, she was creating a commissioned large melting landscape but when exploring with the cord drifted away making a bunch of clowns to release her frustration.

Blanchard uses the cord in different ways: loose in a bundle, rolled and sewn together with bright stitches. The final portrait is pinned to the wall in place.

As always, material exploration guides Elodie's work, she is continuing this series to depict different emotions with humour and playfulness. They all manifest joy and hope.



Poly thread, polyester cords, cotton
cords

H76 x W86 cm

Each unique

£ 1,200.00 + VAT

CONTENT

Elodie Blanchard

Elodie's series of stitched characters, "Masked Feelings" represents the breadth of human emotion.

Each mask manifests feelings and personalities using multicolour threads on thick felt to sketch out features, provoking the viewer to self-reflection and self-discovery. Exploring the range of emotions, Blanchard names each mask after a feeling.



LOVELY**Elodie Blanchard**

Elodie's series of stitched characters, "Masked Feelings" represents the breadth of human emotion.

Each mask manifests feelings and personalities using multicolour threads on thick felt to sketch out features, provoking the viewer to self-reflection and self-discovery. Exploring the range of emotions, Blanchard names each mask after a feeling.

**Felt and thread****H80 x W23.5 x D7 cm****Each unique****£ 950.00 + VAT**

AMAZED

Elodie Blanchard

Elodie's series of stitched characters, "Masked Feelings" represents the breadth of human emotion.

Each mask manifests feelings and personalities using multicolour threads on thick felt to sketch out features, provoking the viewer to self-reflection and self-discovery. Exploring the range of emotions, Blanchard names each mask after a feeling.



GRIEF

Elodie Blanchard

Elodie's series of stitched characters, "Masked Feelings" represents the breadth of human emotion.

Each mask manifests feelings and personalities using multicolour threads on thick felt to sketch out features, provoking the viewer to self-reflection and self-discovery. Exploring the range of emotions, Blanchard names each mask after a feeling.



HARMONIOUS

Elodie Blanchard

Elodie's series of stitched characters, "Masked Feelings" represents the breadth of human emotion.

Each mask manifests feelings and personalities using multicolour threads on thick felt to sketch out features, provoking the viewer to self-reflection and self-discovery. Exploring the range of emotions, Blanchard names each mask after a feeling.



DAZED**Elodie Blanchard**

Elodie's series of stitched characters, "Masked Feelings" represents the breadth of human emotion.

Each mask manifests feelings and personalities using multicolour threads on thick felt to sketch out features, provoking the viewer to self-reflection and self-discovery. Exploring the range of emotions, Blanchard names each mask after a feeling.

**Felt and thread****H59x W29 x D10 cm****Each unique****£ 850.00 + VAT**

SHARP**Elodie Blanchard**

Elodie's series of stitched characters, "Masked Feelings" represents the breadth of human emotion.

Each mask manifests feelings and personalities using multicolour threads on thick felt to sketch out features, provoking the viewer to self-reflection and self-discovery. Exploring the range of emotions, Blanchard names each mask after a feeling.



LONGING

Elodie Blanchard

Elodie's series of stitched characters, "Masked Feelings" represents the breadth of human emotion.

Each mask manifests feelings and personalities using multicolour threads on thick felt to sketch out features, provoking the viewer to self-reflection and self-discovery. Exploring the range of emotions, Blanchard names each mask after a feeling.



Felt and thread

H78 x W34 x D11 cm

Each unique

£ 950.00 + VAT

SERENE**Elodie Blanchard**

Elodie's series of stitched characters, "Masked Feelings" represents the breadth of human emotion.

Each mask manifests feelings and personalities using multicolour threads on thick felt to sketch out features, provoking the viewer to self-reflection and self-discovery. Exploring the range of emotions, Blanchard names each mask after a feeling.

**Felt and thread****H73 x W24 x D6 cm****Each unique****£ 950.00 + VAT**

CONFUSED

Elodie Blanchard

Elodie's series of stitched characters, "Masked Feelings" represents the breadth of human emotion.

Each mask manifests feelings and personalities using multicolour threads on thick felt to sketch out features, provoking the viewer to self-reflection and self-discovery. Exploring the range of emotions, Blanchard names each mask after a feeling.



AGHAST

Elodie Blanchard

Elodie's series of stitched characters, "Masked Feelings" represents the breadth of human emotion.

Each mask manifests feelings and personalities using multicolour threads on thick felt to sketch out features, provoking the viewer to self-reflection and self-discovery. Exploring the range of emotions, Blanchard names each mask after a feeling.



Felt and thread

H53 x W32 cm

Each unique

£ 850.00 + VAT

AWE**Elodie Blanchard**

Elodie's series of stitched characters, "Masked Feelings" represents the breadth of human emotion.

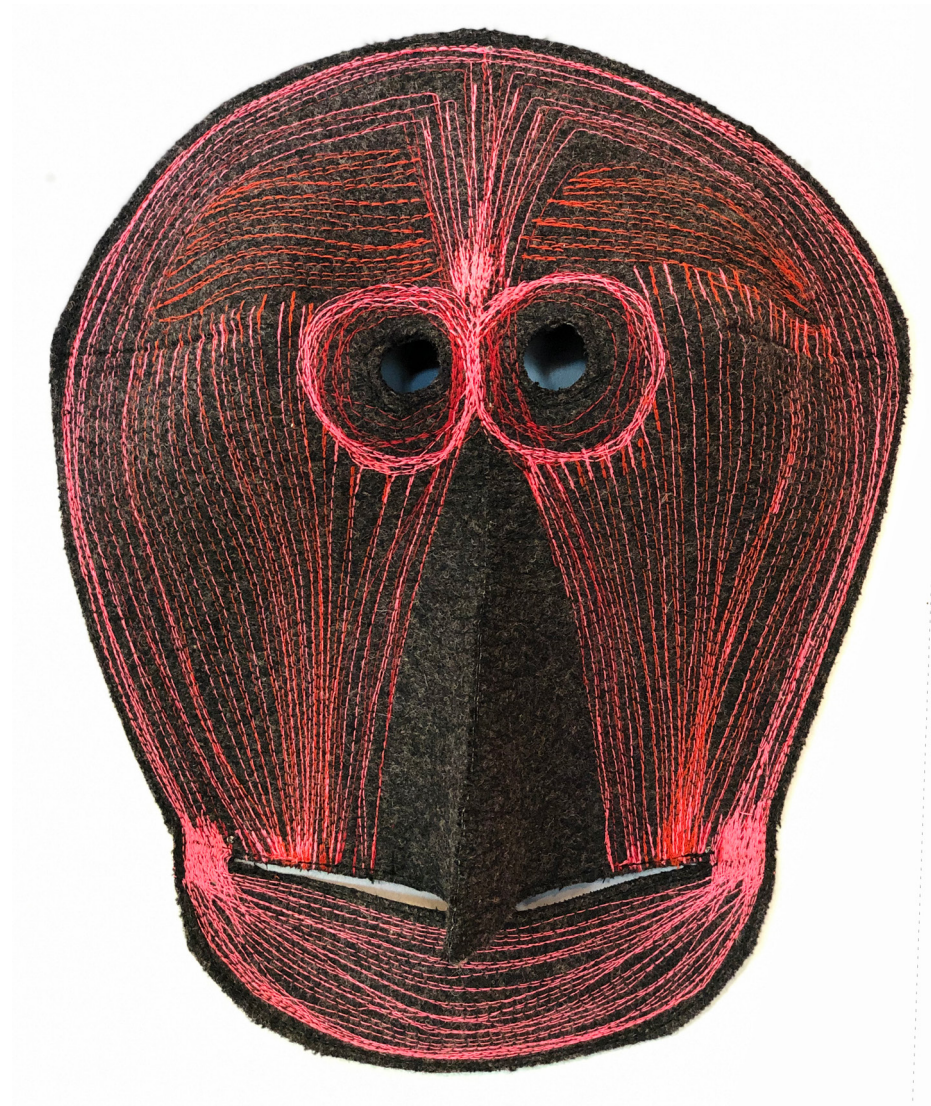
Each mask manifests feelings and personalities using multicolour threads on thick felt to sketch out features, provoking the viewer to self-reflection and self-discovery. Exploring the range of emotions, Blanchard names each mask after a feeling.

**Felt and thread****H41 x W29 cm****Each unique****£ 850.00 + VAT**

BEWILDERED**Elodie Blanchard**

Elodie's series of stitched characters, "Masked Feelings" represents the breadth of human emotion.

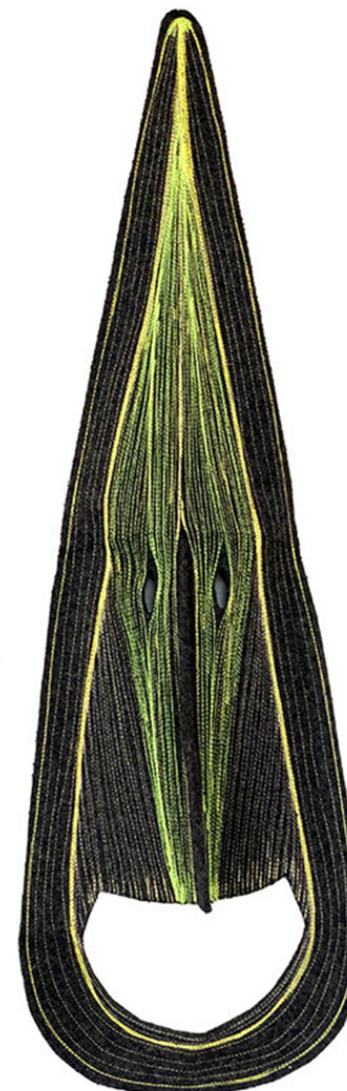
Each mask manifests feelings and personalities using multicolour threads on thick felt to sketch out features, provoking the viewer to self-reflection and self-discovery. Exploring the range of emotions, Blanchard names each mask after a feeling.



CONFIDENT**Elodie Blanchard**

Elodie's series of stitched characters, "Masked Feelings" represents the breadth of human emotion.

Each mask manifests feelings and personalities using multicolour threads on thick felt to sketch out features, provoking the viewer to self-reflection and self-discovery. Exploring the range of emotions, Blanchard names each mask after a feeling.



CONTENT

Elodie Blanchard

Elodie's series of stitched characters, "Masked Feelings" represents the breadth of human emotion.

Each mask manifests feelings and personalities using multicolour threads on thick felt to sketch out features, provoking the viewer to self-reflection and self-discovery. Exploring the range of emotions, Blanchard names each mask after a feeling.



CRITICAL**Elodie Blanchard**

Elodie's series of stitched characters, "Masked Feelings" represents the breadth of human emotion.

Each mask manifests feelings and personalities using multicolour threads on thick felt to sketch out features, provoking the viewer to self-reflection and self-discovery. Exploring the range of emotions, Blanchard names each mask after a feeling.



CURIOUS

Elodie Blanchard

Elodie's series of stitched characters, "Masked Feelings" represents the breadth of human emotion.

Each mask manifests feelings and personalities using multicolour threads on thick felt to sketch out features, provoking the viewer to self-reflection and self-discovery. Exploring the range of emotions, Blanchard names each mask after a feeling.



DEPRESSED

Elodie Blanchard

Elodie's series of stitched characters, "Masked Feelings" represents the breadth of human emotion.

Each mask manifests feelings and personalities using multicolour threads on thick felt to sketch out features, provoking the viewer to self-reflection and self-discovery. Exploring the range of emotions, Blanchard names each mask after a feeling.



Felt and thread

H53 x W32 cm

Each unique

£ 850.00 + VAT

DESPAIR

Elodie Blanchard

Elodie's series of stitched characters, "Masked Feelings" represents the breadth of human emotion.

Each mask manifests feelings and personalities using multicolour threads on thick felt to sketch out features, provoking the viewer to self-reflection and self-discovery. Exploring the range of emotions, Blanchard names each mask after a feeling.



ECSTATIC

Elodie Blanchard

Elodie's series of stitched characters, "Masked Feelings" represents the breadth of human emotion.

Each mask manifests feelings and personalities using multicolour threads on thick felt to sketch out features, provoking the viewer to self-reflection and self-discovery. Exploring the range of emotions, Blanchard names each mask after a feeling.



FUNNY

Elodie Blanchard

Elodie's series of stitched characters, "Masked Feelings" represents the breadth of human emotion.

Each mask manifests feelings and personalities using multicolour threads on thick felt to sketch out features, provoking the viewer to self-reflection and self-discovery. Exploring the range of emotions, Blanchard names each mask after a feeling.



GRIEF

Elodie Blanchard

Elodie's series of stitched characters, "Masked Feelings" represents the breadth of human emotion.

Each mask manifests feelings and personalities using multicolour threads on thick felt to sketch out features, provoking the viewer to self-reflection and self-discovery. Exploring the range of emotions, Blanchard names each mask after a feeling.



JOLLY**Elodie Blanchard**

Elodie's series of stitched characters, "Masked Feelings" represents the breadth of human emotion.

Each mask manifests feelings and personalities using multicolour threads on thick felt to sketch out features, provoking the viewer to self-reflection and self-discovery. Exploring the range of emotions, Blanchard names each mask after a feeling.



OPTIMISTIC**Elodie Blanchard**

Elodie's series of stitched characters, "Masked Feelings" represents the breadth of human emotion.

Each mask manifests feelings and personalities using multicolour threads on thick felt to sketch out features, provoking the viewer to self-reflection and self-discovery. Exploring the range of emotions, Blanchard names each mask after a feeling.



PARALIZED

Elodie Blanchard

Elodie's series of stitched characters, "Masked Feelings" represents the breadth of human emotion.

Each mask manifests feelings and personalities using multicolour threads on thick felt to sketch out features, provoking the viewer to self-reflection and self-discovery. Exploring the range of emotions, Blanchard names each mask after a feeling.



Felt and thread

H37 x W23 cm

Each unique

£ 800.00 + VAT

STUNNED

Elodie Blanchard

Elodie's series of stitched characters, "Masked Feelings" represents the breadth of human emotion.

Each mask manifests feelings and personalities using multicolour threads on thick felt to sketch out features, provoking the viewer to self-reflection and self-discovery. Exploring the range of emotions, Blanchard names each mask after a feeling.



TIRED**Elodie Blanchard**

Elodie's series of stitched characters, "Masked Feelings" represents the breadth of human emotion.

Each mask manifests feelings and personalities using multicolour threads on thick felt to sketch out features, provoking the viewer to self-reflection and self-discovery. Exploring the range of emotions, Blanchard names each mask after a feeling.



VULNERABLE

Elodie Blanchard

Elodie's series of stitched characters, "Masked Feelings" represents the breadth of human emotion.

Each mask manifests feelings and personalities using multicolour threads on thick felt to sketch out features, provoking the viewer to self-reflection and self-discovery. Exploring the range of emotions, Blanchard names each mask after a feeling.



Felt and thread

H56 x W25 cm

Each unique

£ 850.00 + VAT

WISE**Elodie Blanchard**

Elodie's series of stitched characters, "Masked Feelings" represents the breadth of human emotion.

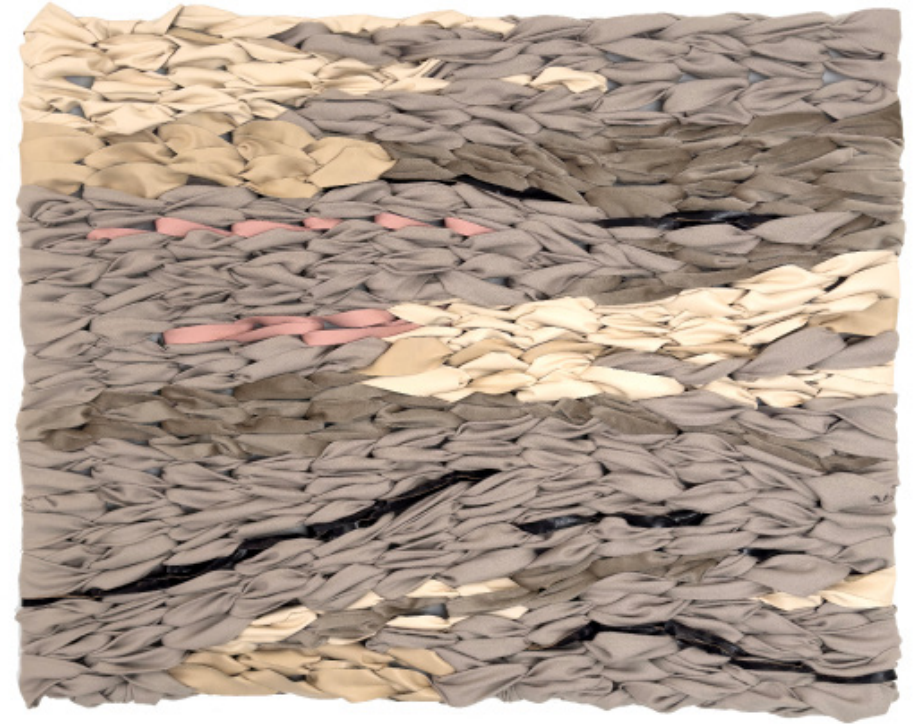
Each mask manifests feelings and personalities using multicolour threads on thick felt to sketch out features, provoking the viewer to self-reflection and self-discovery. Exploring the range of emotions, Blanchard names each mask after a feeling.



Landscape 01

Elodie Blanchard

By repeatedly knotting common industrial fabric, this wall installation forms a textured landscape that blends seamlessly into its surroundings.



Recycled fabric, wool, leather, metal
wire

H100 x W125 cm

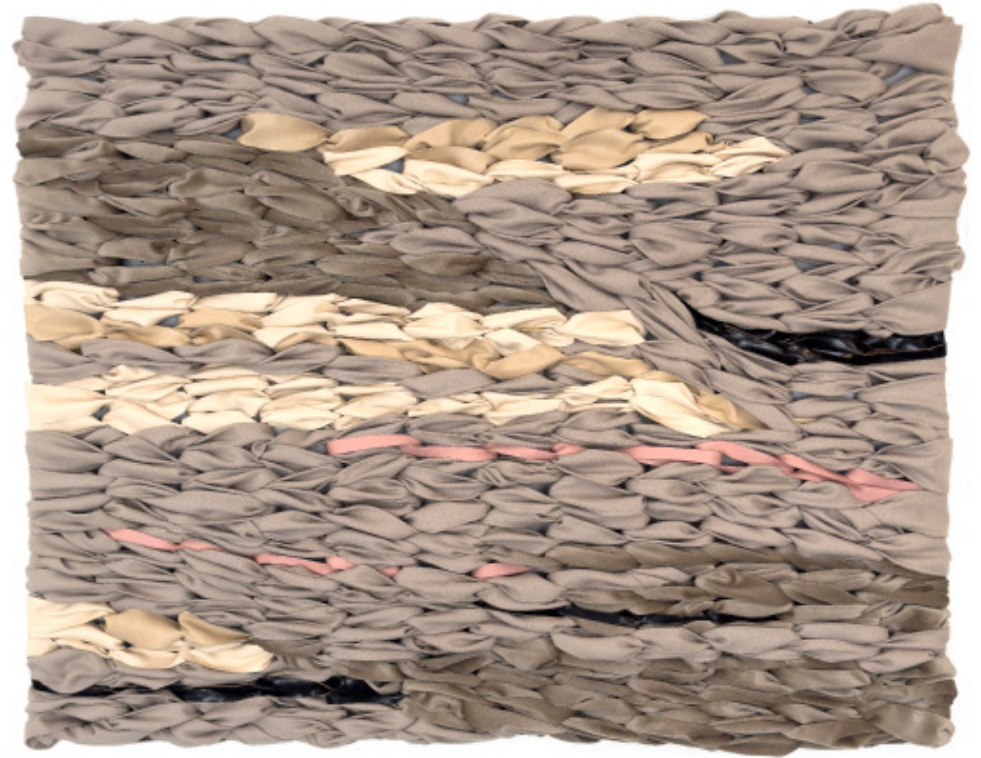
Each unique

£ 3,500.00 + VAT

Landscape 02

Elodie Blanchard

By repeatedly knotting common industrial fabric, this wall installation forms a textured landscape that blends seamlessly into its surroundings.



Landscape 03

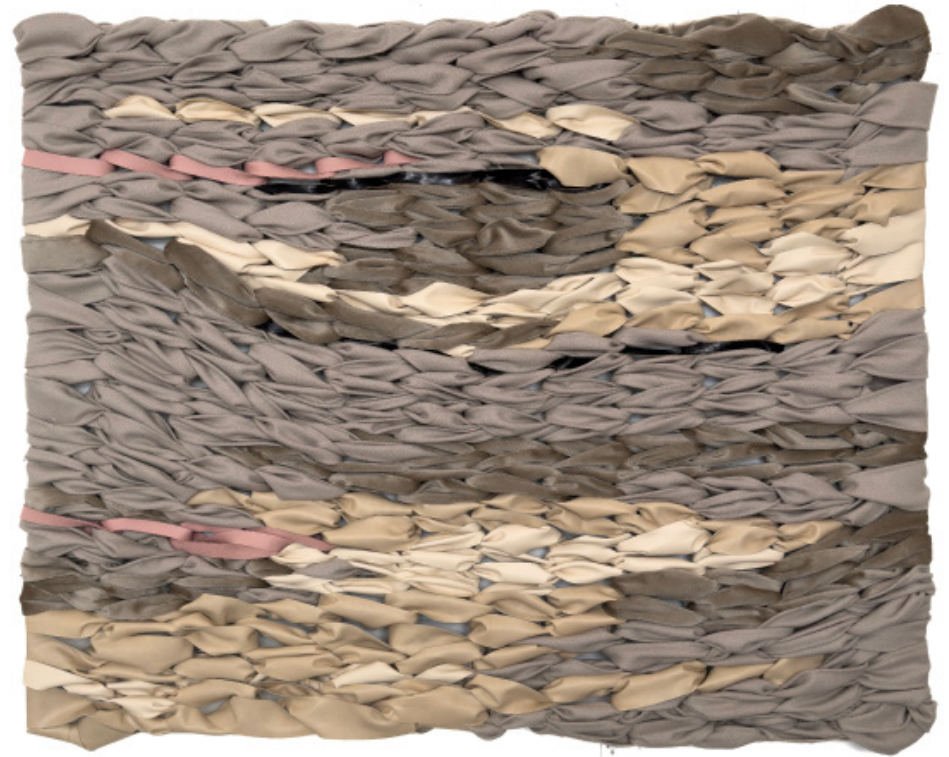
Elodie Blanchard

By repeatedly knotting common industrial fabric, this wall installation forms a textured landscape that blends seamlessly into its surroundings.



Landscape 04**Elodie Blanchard**

By repeatedly knotting common industrial fabric, this wall installation forms a textured landscape that blends seamlessly into its surroundings.



Recycled fabric, wool, leather, metal
wire

H100 x W125 cm

Each unique

£ 3,500.00 + VAT

Bouquet 5

Elodie Blanchard

Elodie Blanchard creates intricate colourful rich bouquets made of small repurposed scraps of textiles, plastic bags, mylar balloons and snack packaging that she layers and stitches together. These collages are all unique, at times realistic, at times abstract, from small sizes to large patterns.

Blanchard is playing with the contrast between the ephemerality of floral arrangements often commemorating important events and the long lifecycle of the waste materials she uses. The inspiration for these collages is drawn from the pictures she takes on her daily walks in the Green-wood Cemetery of decaying bouquets and wedding bouquets found on the internet, saddest and happiest moments in a human's life.



Textiles, mylar balloons, thread,
snack packaging

H49 x W53 x D2.5 cm

Each unique

£ 1,300.00 + VAT

Bouquet 15

Elodie Blanchard

Elodie Blanchard creates intricate colourful rich bouquets made of small repurposed scraps of textiles, plastic bags, mylar balloons and snack packaging that she layers and stitches together. These collages are all unique, at times realistic, at times abstract, from small sizes to large patterns.

Blanchard is playing with the contrast between the ephemerality of floral arrangements often commemorating important events and the long lifecycle of the waste materials she uses. The inspiration for these collages is drawn from the pictures she takes on her daily walks in the Green-wood Cemetery of decaying bouquets and wedding bouquets found on the internet, saddest and happiest moments in a human's life.



Textiles, mylar balloons, thread,
snack packaging

H53 x W53 cm

Each unique

£ 1,300.00 + VAT

Bouquet 20

Elodie Blanchard

Elodie Blanchard creates intricate colourful rich bouquets made of small repurposed scraps of textiles, plastic bags, mylar balloons and snack packaging that she layers and stitches together. These collages are all unique, at times realistic, at times abstract, from small sizes to large patterns.

Blanchard is playing with the contrast between the ephemerality of floral arrangements often commemorating important events and the long lifecycle of the waste materials she uses. The inspiration for these collages is drawn from the pictures she takes on her daily walks in the Green-wood Cemetery of decaying bouquets and wedding bouquets found on the internet, saddest and happiest moments in a human's life.



Textiles, mylar balloons, thread,
snack packaging

H56 x W58 x D1 cm

Each unique

£ 1,300.00 + VAT

Bouquet 23

Elodie Blanchard

Elodie Blanchard creates intricate colourful rich bouquets made of small repurposed scraps of textiles, plastic bags, mylar balloons and snack packaging that she layers and stitches together. These collages are all unique, at times realistic, at times abstract, from small sizes to large patterns.

Blanchard is playing with the contrast between the ephemerality of floral arrangements often commemorating important events and the long lifecycle of the waste materials she uses. The inspiration for these collages is drawn from the pictures she takes on her daily walks in the Green-wood Cemetery of decaying bouquets and wedding bouquets found on the internet, saddest and happiest moments in a human's life.



Textiles, mylar balloons, thread,
snack packaging

H71 x W44 x D2 cm

Each unique

£ 1,300.00 + VAT

Carlo

Elodie Blanchard

“Carlo” is in a series of Growing Out Of Scraps Forest.

These banded multicoloured sculptures are created through repurposing fabrics scraps that are molded into unique figures to create a forest of “nonsense.” Each one is named for a friend, family member, lover, pet, or someone of significance to the artist, suffusing every work with an individual importance.



**Recycled fabric, poly fill, concrete,
metal pipe, fibreglass rod**

250 x 20 x 18 cm

Each unique

£ 3,500.00 + VAT

Pamela

Elodie Blanchard

“Pamela” is in a series of Growing Out Of Scraps Forest.

These banded multicoloured sculptures are created through repurposing fabrics scraps that are molded into unique figures to create a forest of “nonsense.” Each one is named for a friend, family member, lover, pet, or someone of significance to the artist, suffusing every work with an individual importance.



**Recycled fabric, poly fill, concrete,
metal pipe, fibreglass rod**

140 x 20 x 18 cm

Each unique

£ 1,700.00 + VAT

Rox

Elodie Blanchard

“Rox” is in a series of Growing Out Of Scraps Forest.

These banded multicoloured sculptures are created through repurposing fabrics scraps that are molded into unique figures to create a forest of “nonsense.” Each one is named for a friend, family member, lover, pet, or someone of significance to the artist, suffusing every work with an individual importance.



Recycled fabric, poly fill, concrete,
metal pipe, fibreglass rod

213 x 12 x 23 cm

Each unique

£ 2,500.00 + VAT

Xander

Elodie Blanchard

“Xander” is in a series of Growing Out Of Scraps Forest.

These banded multicoloured sculptures are created through repurposing fabrics scraps that are molded into unique figures to create a forest of “nonsense.” Each one is named for a friend, family member, lover, pet, or someone of significance to the artist, suffusing every work with an individual importance.



**Recycled fabric, poly fill, concrete,
metal pipe, fibreglass rod**

244 x 30 x 20 cm

Each unique

£ 3,500.00 + VAT

Brad

Elodie Blanchard

“Brad” is in a series of Growing Out Of Scraps Forest.

These banded multicoloured sculptures are created through repurposing fabrics scraps that are molded into unique figures to create a forest of “nonsense.” Each one is named for a friend, family member, lover, pet, or someone of significance to the artist, suffusing every work with an individual importance.



**Recycled fabric, poly fill, concrete,
metal pipe, fibreglass rod**

149 x 28 x 23 cm

Each unique

£ 1,500.00 + VAT

Caroline

Elodie Blanchard

“Caroline” is in a series of Growing Out Of Scraps Forest.

These banded multicoloured sculptures are created through repurposing fabrics scraps that are molded into unique figures to create a forest of “nonsense.” Each one is named for a friend, family member, lover, pet, or someone of significance to the artist, suffusing every work with an individual importance.



**Recycled fabric, poly fill, concrete,
metal pipe, fibreglass rod**

140 x 23 x 23 cm

Each unique

£ 1,500.00 + VAT

Dave

Elodie Blanchard

“Dave” is in a series of Growing Out Of Scraps Forest.

These banded multicoloured sculptures are created through repurposing fabrics scraps that are molded into unique figures to create a forest of “nonsense.” Each one is named for a friend, family member, lover, pet, or someone of significance to the artist, suffusing every work with an individual importance.



Recycled fabric, poly fill, concrete,
metal pipe, fibreglass rod

140 x 20 x 18 cm

Each unique

£ 1,500.00 + VAT

Jean Ga

Elodie Blanchard

“Jean Ga” is in a series of Growing Out Of Scraps Forest.

These banded multicoloured sculptures are created through repurposing fabrics scraps that are molded into unique figures to create a forest of “nonsense.” Each one is named for a friend, family member, lover, pet, or someone of significance to the artist, suffusing every work with an individual importance.



Recycled fabric, poly fill, concrete,
metal pipe, fibreglass rod

147 x 33 x 48 cm

Each unique

£ 1,500.00 + VAT

Pierre

Elodie Blanchard

“Pierre” is in a series of Growing Out Of Scraps Forest.

These banded multicoloured sculptures are created through repurposing fabrics scraps that are molded into unique figures to create a forest of “nonsense.” Each one is named for a friend, family member, lover, pet, or someone of significance to the artist, suffusing every work with an individual importance.



Recycled fabric, poly fill, concrete,
metal pipe, fibreglass rod

140 x 28 x 23 cm

Each unique

£ 1,500.00 + VAT

Louise

Elodie Blanchard

“Louise” is in a series of Growing Out Of Scraps Forest.

These banded multicoloured sculptures are created through repurposing fabrics scraps that are molded into unique figures to create a forest of “nonsense.” Each one is named for a friend, family member, lover, pet, or someone of significance to the artist, suffusing every work with an individual importance.



Recycled fabric, poly fill, concrete,
metal pipe, fibreglass rod

140 x 33 x 48 cm

Each unique

£ 1,500.00 + VAT

Onka Allmayer-Beck

Onka Allmayer-Beck (Austria, 1979) is a ceramic artist, illustrator and costume designer living in Vienna. After graduating from Central Saint Martin in fashion design in 2004, she lived and worked in Milan until 2016 as a fashion designer for various brands (Carol Christian Poell, Strenesse, Giorgio Armani). In parallel, Onka began a path as an illustrator leading her closer to the art world. Lately, she has dedicated her career to making ceramics, as well as illustrations, installations and costume designs, notably costumes for *Der Rosenkavalier*, directed by André Heller in collaboration with Arthur Arbesser at the Berlin State Opera.

Her work has been shown in Vienna, Kunsthalle Feldbach, M.A.X.Museo Chiasso, Schloss Hollenegg, Moscow, Milan, Barcelona and London... She was also part of the 17th Biennale in Siberia 2017 and Vienna Design Week 2019 and London design Week 2021.

Onka's vessels are wobbly and peculiar in shape, made intuitively using the slab-building technique and glazed in bright colours. There is something animal-like or anthropomorphic about her works, which nonetheless have retained their practical purpose.



Elodie Blanchard

Elodie Blanchard (France, 1976) is an artist and designer living in New York. Blanchard studied sculpture at l'Ecole Supérieure des Beaux Arts de Paris, fashion at l'Ecole des Arts Appliqués Duperré, where she explored the material intelligence of textiles; and performance at CalArts, where she collaborated with musicians and dancers. She established her design studio in 2005, and over the course of her career, worked with numerous architects, designers and brands, developing textile collections and working on large scale works for public spaces, institutions, residences, offices, and hotels, in New York, Chicago, Los Angeles, Boston, Houston etc. She was awarded the “interiors + sources” designer of the year in the US and the recipient of the “Artist in Residence” at the Museum of Arts and Design in New York.

Through material exploration, repurposing, and a near-meditative process of repetition, Elodie transforms the discarded and the commonplace into fantastical objects and playful environments that permit us to explore our ambiguous relationship to nature, others, and ourselves. Her universe is joyful and humorous.





SEEDSLONDON.COM
SEEDS@SEEDSLONDON.COM

Showroom by appointment:
4, Douro Place, London W8 5PH